

Figures 63–69.—Morphology of *Alaranea* spp. 63–66, 69. Dorsal view, 64 and 65 abdomen only; 67. Ventral view; 68. Lateral view; 67–69. *Alaranea alba* new species, holotype male. (Scale bar = 1 mm) [Griswold, 1997: 73].

Alaranea alba new species

Figs. 55, 57, 58, 67–69, 78–83, 92, 98

Types.—Male holotype and 1♂3♀ paratypes from Beria, Madagascar, June 1969 (A. Lambillon) (MRAC 142.978), MRAC except 1♂1♀ (CAS).

Etymology.—The species name refers to the largely white coloration.

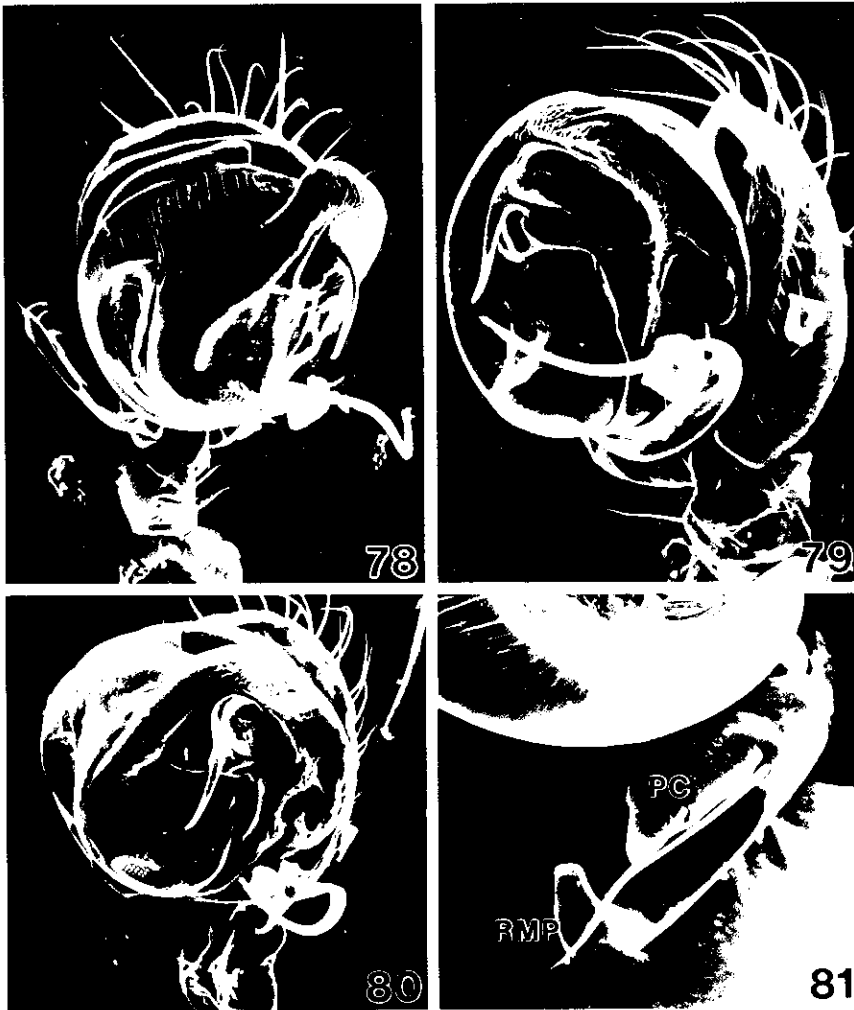
Diagnosis.—Conductor undivided, proximal point elongate attenuate (Figs. 58, 79, 80); sternum pale yellow-brown, abdomen white marked only with lateral, ventral, and posterior black spots (Figs. 67–69).

Description.—*Male (holotype):* As in Figs. 67–69. Total length 1.80. Carapace pale yellow-brown, unmarked, thoracic fovea brown, ocular area black on ocular quadrangle and between lateral eyes; clypeus, chelicerae, sternum, labium, and palpal coxae yellow-brown, unmarked; legs and palpi yellow-white, unmarked; cymbium and tegulum yellow-brown; abdomen white, with brown sclerotization extending from epigastric furrow to and surrounding pedicel to form annulate petiole, dorsum with faint dorsolateral dusky markings beneath shiny transparent scutum, with black oval spots laterally, ventrally, and at posterior apex. Carapace 0.86 long, 0.58 wide, 0.30 high, oval in dorsal view; PER 0.35 wide, AER 0.34, OAL 0.16; ratio AM:AL:PM:PL, 1.2:1.0:1.0:1.5, PM diameter 0.05. Clypeus 0.10 high, chelicerae 0.32 long. Sternum 0.44 long, 0.42 wide; labium 0.08 long, 0.12 wide;

palpal coxae 0.16 long, 0.10 wide. Leg measurements (femur + patella + tibia + metatarsus + tarsus = [Total]): I: 1.92 + 0.36 + 1.48 + 1.44 + 0.96 = [6.16]; II: 1.72 + 0.36 + 1.44 + 1.36 + 0.88 = [5.76]; III: 1.12 + 0.28 + 0.72 + 0.88 + 0.56 = [3.56]; IV: 1.60 + 0.30 + 1.20 + 1.04 + 0.64 = [4.78]; Palp: 0.28 + 0.10 + 0.08 + (absent) + 0.28 = [0.74]. Palp (Figs. 57, 58, 78–81) with cymbial RMP bifid, with outer ventrad- and inner distad-directed processes, PC slender, pointed in lateral view; tegulum apex weakly pustulate, TL pointed ventrally, denticulate area small; C large, single, complex, with prolateral smooth concavity and retrolateral slender basad-directed process; PP large, swollen, with recurved apical process.

Variation: ($n = 2$). Total length 1.80–1.84; ratio of carapace height/width 0.40–0.52; ratios of PER/OQP 2.54–2.69, PER/OAL 2.19–2.36, OQP/OQA 0.93–1.00, distance PM-PL/diameter PM 1.40–1.50, diameter AM/PM 1.20–1.50; ratios of clypeal height/AM diameter 1.67–2.33, cheliceral length/clypeal height 1.93–3.20; ratio of sternum length/width 0.91–1.04; ratio of length femur I/carapace width 1.63–1.65.

Female (paratype): Total length 1.72. Markings and structure as in male, except sclerotization of abdominal petiole weaker, yellow-white. Carapace 0.82 long, 0.54 wide,



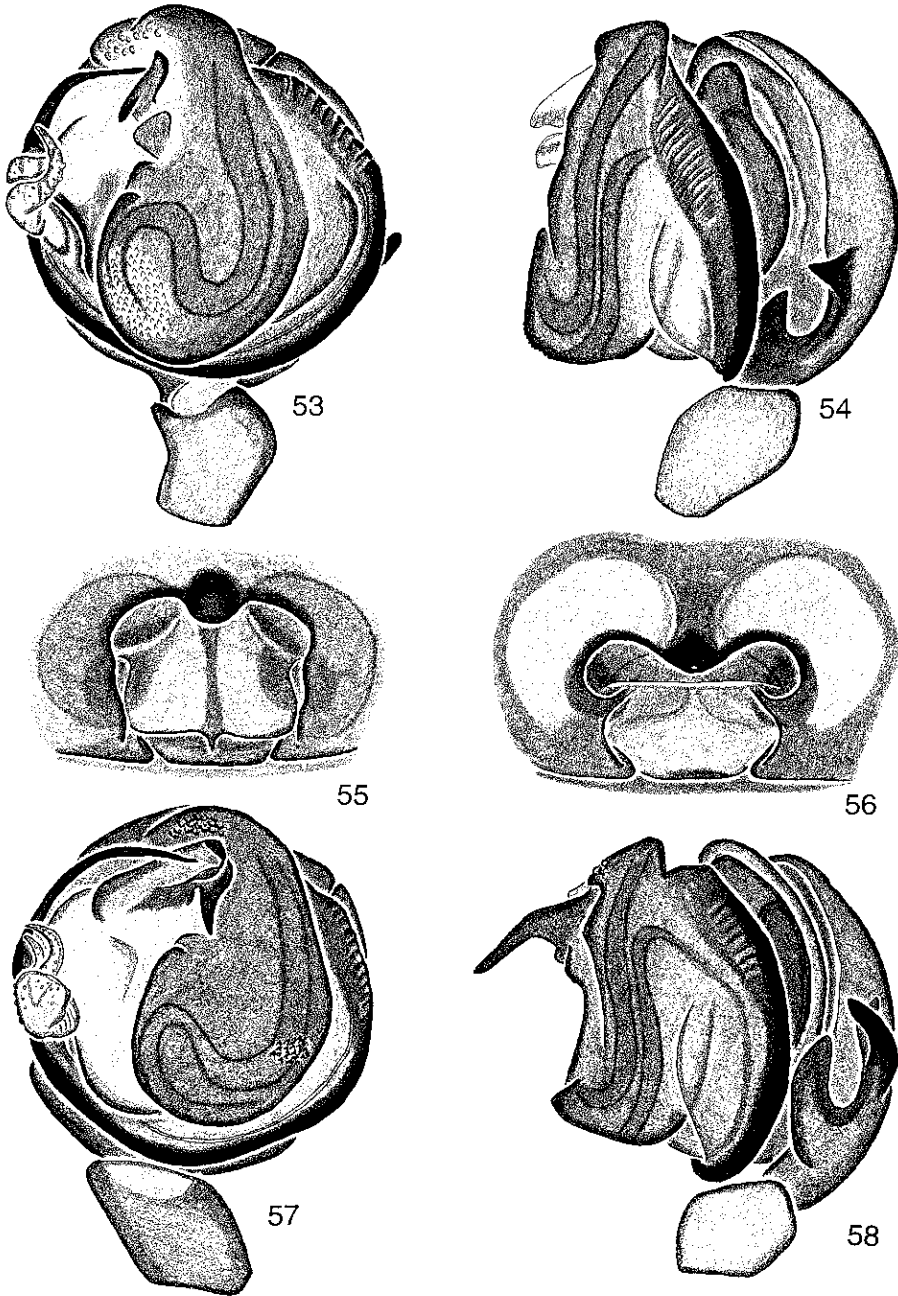
Figures 78–81.—*Alaranea alba* new species, holotype male, right palp. 78. Retroventral view; 79. Proventral view; 80. Ventral view; 81. Cymbial base, retroapical view. PC = paracymbium; RMP = retromedian cymbial process.

0.26 high; PER 0.30 wide, AER 0.29 wide, OAL 0.12; ratio AM:AL:PM:PL, 1.5:1.0:1.0:1.0, PM diameter 0.05. Clypeus 0.10 high, chelicerae 0.24 long. Sternum 0.40 long and wide; labium 0.08 long, 0.12 wide; palpal coxae 0.12 long, 0.10 wide. Leg measurements (femur + patella + tibia + metatarsus + tarsus = [Total]): I: 2.08 + 0.36 + 1.76 + 1.68 + 1.12 = [7.00]; II: 2.00 + 0.36 + 1.64 + 1.52 + 0.96 = [6.48]; III: 1.16 + 0.28 + 0.72 + 0.84 + 0.60 = [3.60]; IV: 1.80 + 0.32 + 1.40 + 1.20 + 0.80 = [5.52]; Palp: 0.20 + 0.08 + 0.12 + (absent) + 0.20 = [0.60]. Epigynum as in Figs. 55, 82, 83, distance from tip of S to posterior margin greater than in

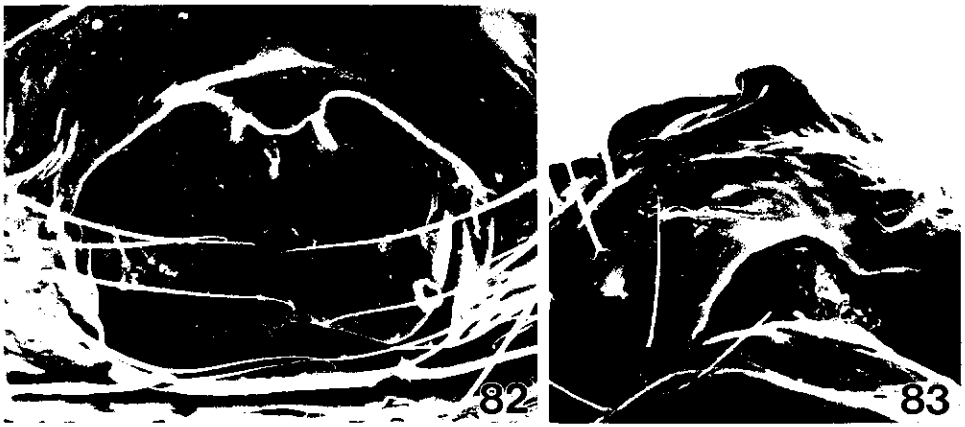
Alaranea betsileo new species; vulva as in Fig. 92, hemispherical AD relatively larger in relation to HS than in other *Alaranea*.

Variation: ($n = 3$). Total length 1.64–1.84; ratios of carapace/width length 1.39–1.52, height/width 0.38–0.48; ratios of PER/OQP 2.14–2.50, PER/OAL 2.50–2.58, OQP/OQA 0.86–1.00, diameter AM/PM 1.00–1.20; ratios of clypeal height/AM diameter 1.67–2.40, cheliceral length/clypeal height 2.50–2.60; ratio of sternum length/width 0.95–1.05; ratio of length femur I/carapace width 1.78–1.92.

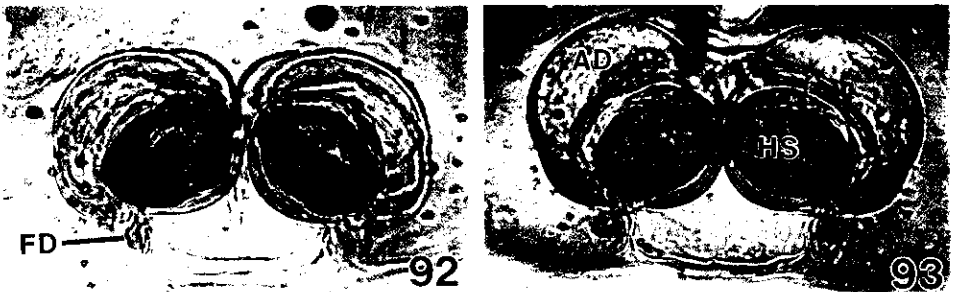
Distribution.—Known only from the type locality near Beria at 19°40'S, 45°23'E, in Toiliara Province, Madagascar (Fig. 98).



Figures 53–58.—Genitalia of *Alaranea* spp. 53, 54, 57, 58. Left male palpus: 55, 56. Epigynum: 53, 55–57. Ventral view; 54, 58. Retrolateral view; 53, 54, 56. *Alaranea betsileo* new species, from 7 km W Ranomafana; 55. *A. alba* new species, paratype; 57, 58. *A. alba* new species, holotype. [Griswold, 1997: 70].



Figures 82–85.—Epigyna of *Alaranea* spp. 82, 84. Ventral view; 83, 85. Lateral view: 82, 83. *Alaranea alba* new species, paratype. [Griswold, 1997: 78].



Figures 90–93.—Vulvae of *Alaranea* spp., cleared, dorsal view. 92. *Alaranea alba* new species, paratype; 93. *Alaranea ardua* new species, Marojejy. AD = afferent duct; FD = fertilization duct; HS = spermathecal head. [Griswold, 1997: 80].

Material examined.—Only the type series.

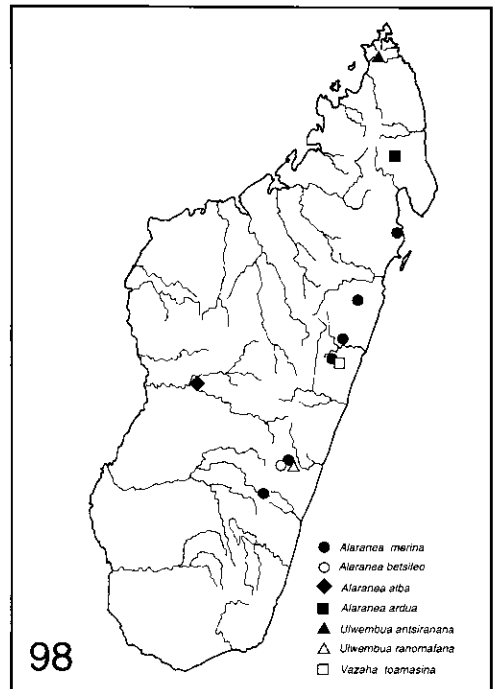


Figure 98.—Map showing distributions of Cyatholipidae in Madagascar. [Griswold, 1997: 82].