

Griswold, C. E. 2001. A monograph of the living world genera and Afrotropical species of cyatholipid spiders (Araneae, Orbiculariae, Araneoidea, Cyatholipidae). Mem. Calif. Acad. Sci. 26: 84-85.

Ulwembua nigra, new species

Figures 121A, B; 122A–D; 123A–C; 133D; 154

TYPES. — Male holotype and female paratype from Madagascar, Antsiranana Province, Marojejy Reserve, 10.5 km NW Manantenina, elev. 1625 m, 6–12 November 1996, E. L. Quinter, deposited in AMNH.

ETYMOLOGY. — Latin, dark.

DIAGNOSIS. — Males are distinguished from all other *Ulwembua* except *U. antsiranana* by having the E strongly sinuate across the base of the tegulum (Fig. 123A), and from that species by having the C and RMP single (Fig. 122C); females are distinguished from all other *Ulwembua* by the character combination epigynum (Fig. 123C) with S at the apex of the atrium, the median septum broad, and the AD with paired median pockets separated from the lateral loops (Fig. 133D).

MALE (holotype). — Total length 2.55. Carapace (Fig. 121A) and chelicerae red-brown, finely mottled with black, black surrounding AME, PME and lateral eyes, and black extending posteriorly from AME to PME, clypeus dusky between AME and cheliceral margin; pedipalpal coxae, labium and sternum dusky dark brown; coxae, trochanters, and pedipalpal femur to tibia yellow-white, cymbium brown, legs pale yellow-brown at base of femora shading to yellow-brown from femoral apex to tarsi, unmarked; abdomen (Fig. 121A) dark grey, unmarked, brown sclerotization extending from epigastric furrow to and faintly surrounding pedicel, abdomen not petiolate. Carapace 0.97 long, 0.59 wide, 0.26 high, texture granulate; thoracic fovea a shallow oval; PER 0.37 wide, AER 0.36 wide, OAL 0.17; ratio AME:ALE:PME:PLE, 1.50:1.37:1.00:1.50, PME diameter 0.04. Clypeus 0.14 high, chelicerae 0.26 long. Sternum 0.50 long, 0.46 wide, rugose, sclerotized points extending between coxae and nearly meeting; labium 0.10 long, 0.16 wide; pedipalpal coxae 0.16 long, 0.10 wide. Leg measurements (Femur + Patella + Tibia + Metatarsus + Tarsus = [Total]): I: $2.59 + 0.23 + 2.59 + 2.19 + 1.04 = [8.64]$; II: $1.70 + 0.23 + 1.47 + 1.28 + 0.74 = [5.42]$; III: $0.74 + 0.17 + 0.62 + 0.55 + 0.42 = [2.50]$; IV: $1.21 + 0.21 + 0.94 + 0.72 + 0.42 = [3.50]$; pedipalpus: $0.26 + 0.11 + 0.08 + (\text{absent}) + 0.31 = [0.76]$. Palp with cymbial RMP long, slender, PC slender in lateral view, making broad arc (Fig. 123B); tegulum apex with groove (Fig. 122B), lacking apical lobe, MLT denticulate; C single, large, denticulate on inner surface (Fig. 122C); E strongly sinuate across base of tegulum (Figs. 122B, 123A).

VARIATION (N = 2). — Total length 2.13–2.55; ratios of carapace length/width 1.56–1.64, height/width 0.42–0.45; ratios of PER/OQP 2.61–2.69, PER/OAL 2.18–2.27, OQP/OQA 1.00, diameter AME/PME 1.33–1.50; ratios of clypeal height/diameter AME 2.17–2.50, cheliceral length/clypeal height 1.92–1.93; ratio of length femur I/carapace width 4.36–5.60.

FEMALE (paratype). — Total length 2.55. Structure as in male; markings (Fig. 121B) as in male except carapace orange-brown mottled with black, with black median band on pars

cephalica and black along lateral margin; abdomen white with lateral grey band extending from anterior margin posteriorly to apex, with pair of dorsomedian broken longitudinal dark bands, venter grey from pedicel to apex. Carapace 0.88 long, 0.52 wide, 0.23 high; PER 0.34 wide, AER 0.32 wide, OAL 0.17; ratio AME:ALE:PME:PLE, 1.50:1.25:1.00:1.50, PME diameter 0.04. Clypeus 0.11 high, chelicerae 0.26 long. Sternum 0.49 long, 0.46 wide; labium 0.09 long, 0.14 wide; pedipalpal coxae 0.16 long, 0.09 wide. Leg measurements (Femur + Patella + Tibia + Metatarsus + Tarsus = [Total]): I: $2.02 + 0.23 + 1.70 + 1.55 + 0.81 = [6.31]$; II: $1.38 + 0.23 + 1.08 + 1.04 + 0.64 = [4.37]$; III: $0.66 + 0.17 + 0.49 + 0.47 + 0.38 = [2.17]$; IV: $1.10 + 0.19 + 0.81 + 0.66 + 0.40 = [3.16]$; pedipalpus: $0.20 + 0.07 + 0.11 + (\text{absent}) + 0.28 = [0.66]$. Epigynum as in Fig. 123C; vulva as in Fig. 133D.

VARIATION (N = 3). — Total length 2.06–2.55; ratios of carapace length/width 1.54–1.68, height/width 0.37–0.44; ratios of PER/OQP 2.46–2.67, PER/OAL 2.28–2.31, OQP/OQA 0.92–1.08, diameter AME/PME 1.25–1.50; ratios of clypeal height/diameter AME 1.67–2.00, cheliceral length/clypeal height 2.27–2.70; ratio of length femur I/carapace width 3.33–3.80. The relative size and intensity of light and dark markings on the abdomen vary.

NATURAL HISTORY. — Unknown.

DISTRIBUTION. — Northern Madagascar (Fig. 154).

ADDITIONAL MATERIAL EXAMINED. — MADAGASCAR: **Antsiranana**: Marojejy Reserve, 10.5 km NW Manantenina, elev. 1625 m, beaten from vegetation along tributary at head of Andranomifototra River, 14° 26.4'S, 49° 44.5'E, 6–12 November 1996, E. L. Quinter (1♂2♀ AMNH); 11 km WSW Befingotra, Res. Anjanaharibe-Sud, 14°45'S, 49°27'E, elev. 1565 m, 16–20 November 1994, B. L. Fisher (1♀ CASC).

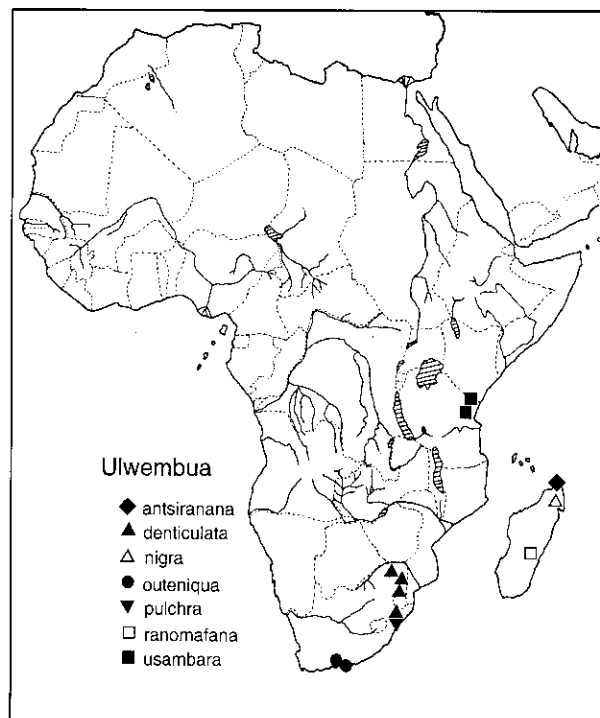


FIGURE 154. Africa, showing distribution of *Ulwembua*. [Griswold, 2001: 240].

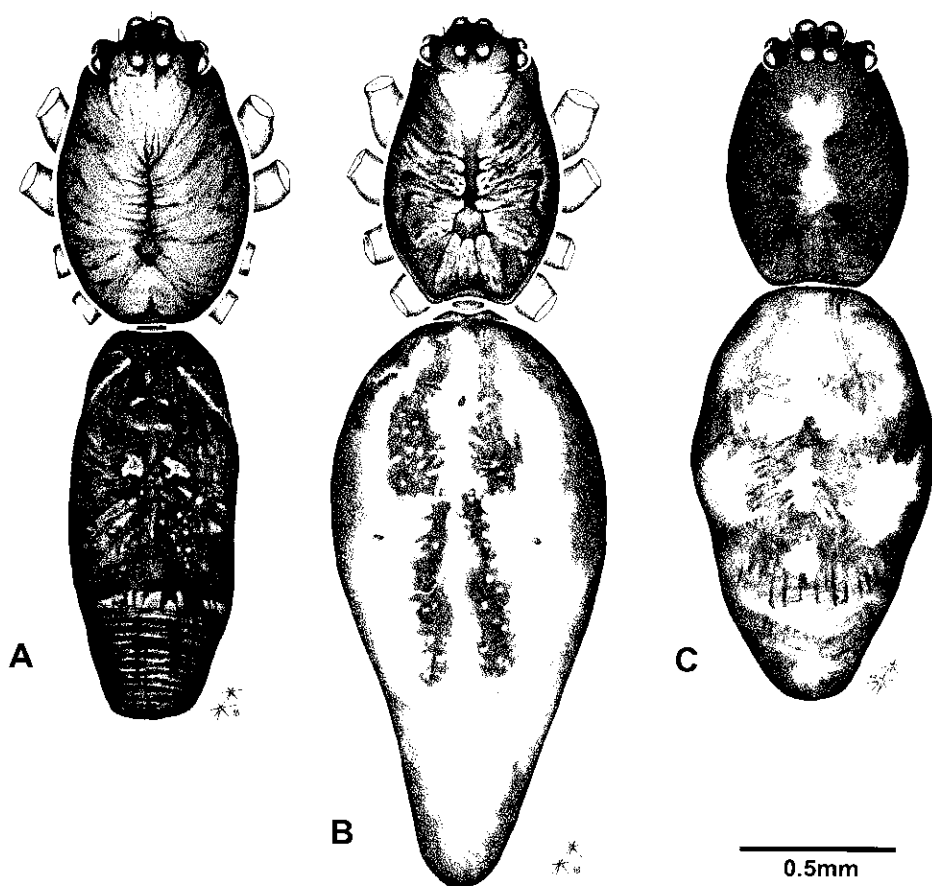


FIGURE 121. *Ulwembua* spp, dorsal views. A. *U. nigra*, new species, holotype ♂. B. *U. nigra*, new species, paratype ♀. C. *U. outeniqua* Griswold, ♀ from Harkerville State Forest. Illustrations by JS.

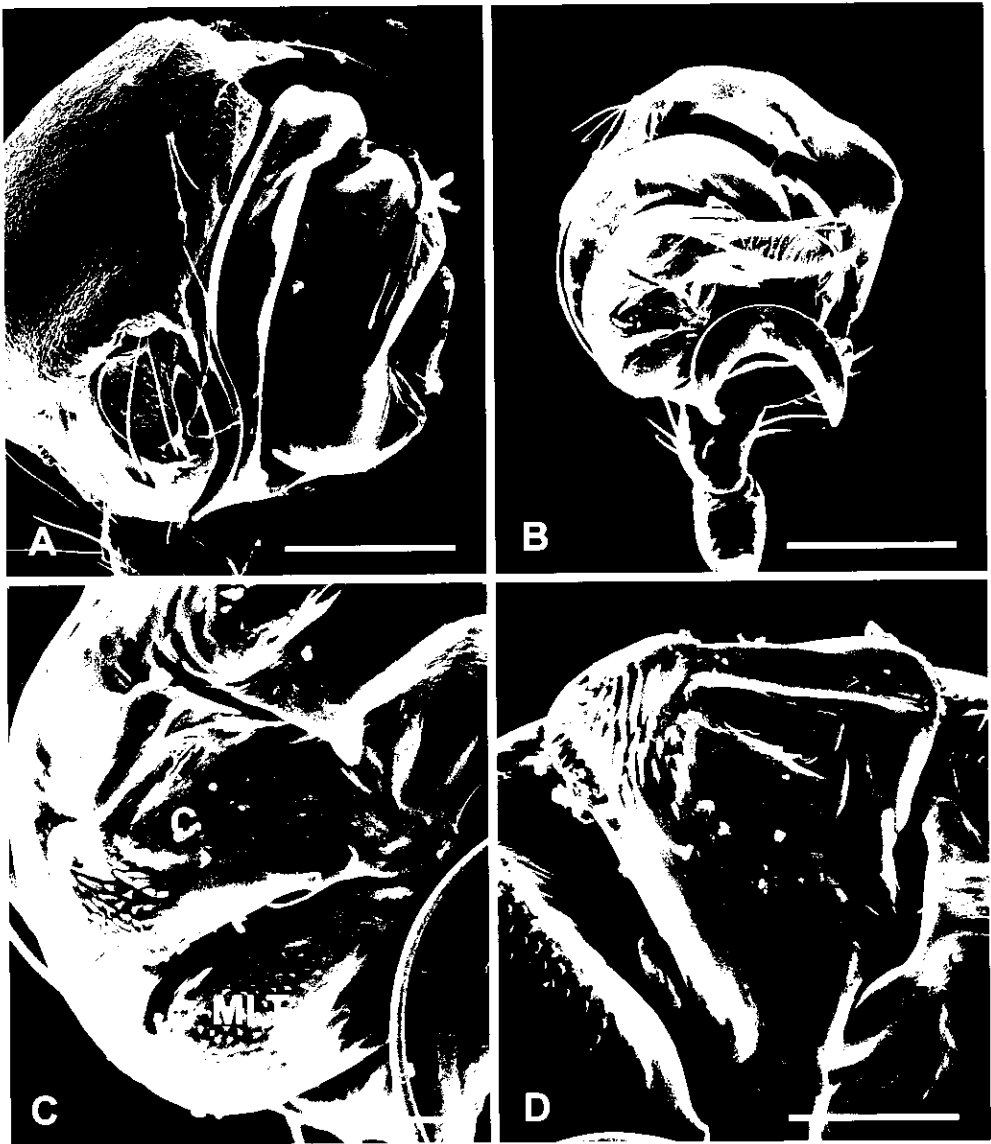


FIGURE 122. *Ulwembua nigra*, new species, right pedipalpus of ♂ from Marojejy. A. Retrolateral. B. Ventral C. Conductor and MLT, ventral. D. Detail of conductor. C = conductor, MLT = median lobe of tegulum. Scale bars for A = 100 μ m, B = 150 μ m, C = 43 μ m, D = 30 μ m.

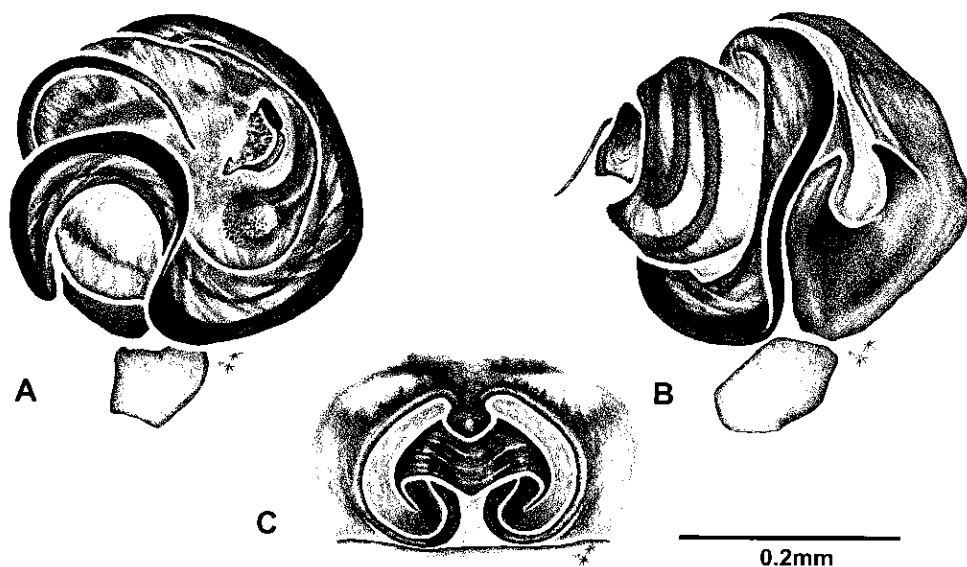


FIGURE 123. Genitalia of *Ulwembua nigra*, new species. A, B. Holotype ♂, left pedipalpus. C. Paratype ♀, epigynum. A, C. Ventral. B. Retrolateral. Illustrations by JS.



FIGURE 133. Cleared vulvae of Cyatholipidae. A–E. *Ulwembua* spp. A–E, G. Dorsal. D. *U. nigra*, new species, ♀ from Marojejy. AD = vulval afferent duct, FD = fertilization duct, HS = spermathecal head. Scale bar = 0.1 mm. [Griswold, 2001: 224].