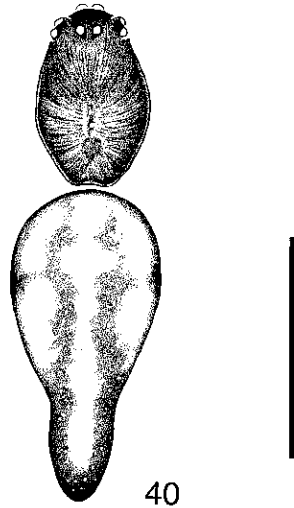


Griswold, C. E. 1997. The spider family Cyatholipidae in Madagascar (Araneae, Araneoidea). *J. Arachnol.* 25: 65-67.



40

Figures 38–40.—Female Cyatholipidae, dorsal views. 40. *Vazaha toamasina* new species, paratype. (Scale bar = 1 mm)

Vazaha toamasina new species
Figs. 29, 30, 37, 40–48, 98

Types.—Male holotype and female paratype from forest at an elevation of 1000 m at Parc National Perinét, Toamasina Province, Madagascar, 4–5 November 1993, C. E. Griswold (CAS).

Etymology.—From the home province, a noun in apposition to the generic name.

Diagnosis.—See generic diagnosis above.

Description.—*Male (holotype):* As in Figure 41. Total length 2.38. Carapace dusky yellow-brown, pale yellow-brown in center behind pars cephalica surrounding thoracic fovea, ocular area dusky, dark grey surrounding AME; clypeus and chelicerae dusky grey-brown, unmarked, palpal coxae, labium and sternum dark grey-brown; coxae and trochanters white, legs shading from white at base to pale yellow-brown from distal femora to tarsi, palpi white except for grey-brown cymbium; abdomen pale grey, dorsum with median pair of longitudinal dark bands that meet posteriorly outlining median white area and laterally outlining an anterior and median light longitudinal spot, venter dark grey from pedicel to beyond spinnerets, weakly sclerotized ventrally between pedicel and epigastric furrow,



37

Figures 37.—Vulvae of Cyatholipidae, dorsal view, cleared.
37. *Vazaha toamasina* new species, paratype. AD = afferent duct; FD = fertilization duct; HS = spermathecal head. [Griswold, 1997: 64].

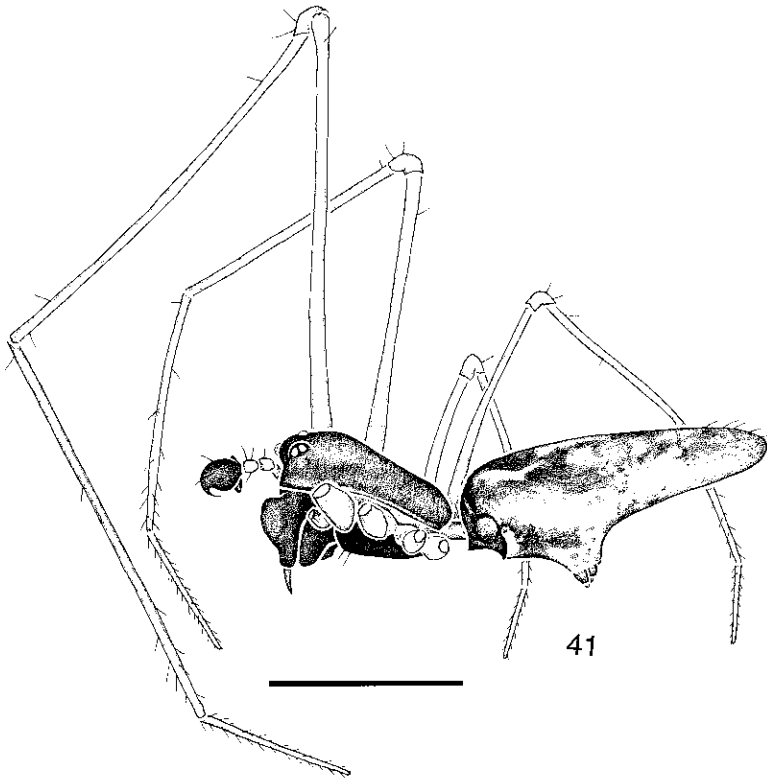


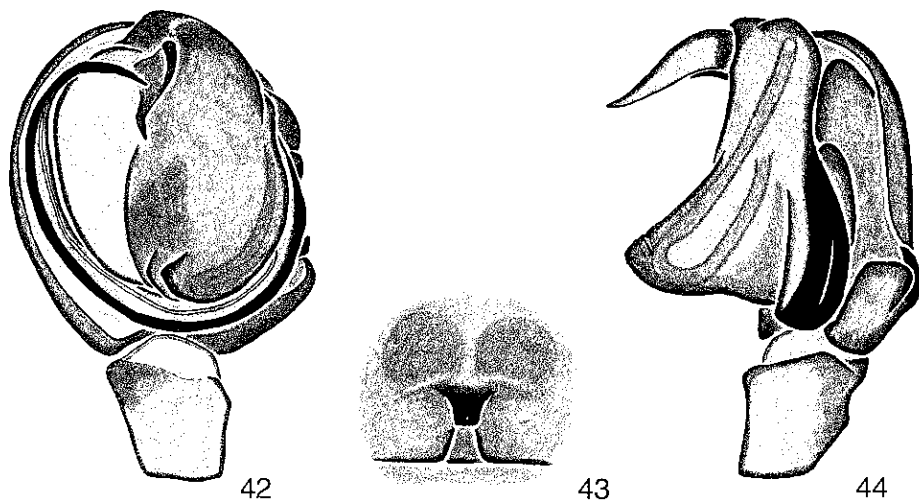
Figure 41.—*Vazaha toamasina* new species, holotype male, lateral view. (Scale bar = 1 mm)

otherwise unsclerotized, abdominal setae fine, with small setal base picks on anterior margin. Carapace 1.09 long, 0.68 wide, 0.35 high, oval in dorsal view, posterior margin weakly concave, finely rugose, thoracic fovea a shallow oval; PER and AER 0.43 wide, OAL 0.20; ratio AM:AL:PM:PL, 1.0:1.33:1.0:0.92, PM diameter 0.06. Clypeus 0.16 high, chelicerae 0.46 long, with large antierad-directed basal projection. Sternum 0.60 long, 0.55 wide, finely granulate; labium 0.11 long, 0.18 wide; palpal coxae 0.21 long, 0.16 wide; leg coxae surrounded by unsclerotized cuticle. Leg measurements (femur + patella + tibia + metatarsus + tarsus = [Total]): I: 2.64 + 0.23 + 2.38 + 2.36 + (missing) = [?]; II: 1.94 + 0.25 + 1.59 + 1.57 + 0.81 = [6.16]; III: 0.89 + 0.21 + 0.68 + 0.68 + 0.47 = [2.93]; IV: 1.42 + 0.23 + 1.00 + 1.00 + 0.49 = [4.14]; Palp: 0.33 + 0.13 + 0.08 + (absent) + 0.26 = [0.80]. Palp (Figs. 42, 44–48) with cymbial RMP short, narrow, directed distad, PC broad and blunt in lateral view; tegulum apex a small, pointed lobe, TL pointed, weakly wrin-

kled; C a distal, simple, elongate basad-directed triangle; E stout, arising near 2 o'clock, PP absent.

Female (paratype): As in Fig. 40. Total length 2.21. Markings as in male. Carapace 1.01 long, 0.70 wide, 0.31 high; PER 0.40 wide, AER 0.38 wide, OAL 0.19; ratio AM:AL:PM:PL, 1.17:1.0:1.0:1.0, PM diameter 0.06. Clypeus 0.11 high, chelicerae 0.39 long, with small antierad-directed basal projection. Sternum 0.59 long, 0.51 wide, texture nearly smooth; labium 0.14 long, 0.18 wide; palpal coxae 0.21 long, 0.15 wide. Leg measurements (femur + patella + tibia + metatarsus + tarsus = [Total]): I: 2.29 + 0.25 + 1.91 + 1.91 + 0.91 = [7.27]; II: 1.62 + 0.28 + 1.28 + 1.28 + 0.72 = [5.18]; III: 0.74 + 0.21 + 0.57 + 0.57 + 0.42 = [2.51]; IV: 1.28 + 0.21 + 0.96 + 0.81 + 0.47 = [3.73]; Palp: 0.25 + 0.08 + 0.11 + (absent) + 0.28 = [0.72]. Epigynum as in Figs. 29, 30, 43, with S but lacking MH; vulva as in Fig. 37, CO lead directly to large, sclerotized HS, AD absent.

Variation: ($n = 2$). Total length 2.21–2.81;



Figures 42-44.—Genitalia of *Vazaha toamasina* new species. 42, 44. Left male palpus, holotype; 43. Epigynum, paratype; 42, 43. Ventral view; 44. Retrolateral view.

ratios of carapace length/width 1.43–1.51, height/width 0.43–0.45; ratios of PER/OQP 2.53–2.78, PER/OAL 2.11–2.17, OQP/OQA 0.87–1.00, diameter AM/PM 1.17–1.45; ratios of clypeal height/diameter AM 1.25–1.57, cheliceral length/clypeal height 3.36–4.00; ratio of length femur I/carapace width 3.22–3.35.

Distribution.—Known only from the type locality on the eastern escarpment in central Madagascar (Fig. 98).

Additional material examined.—MADAGASCAR: *Toamasina Province*. Parc National Perinét, near Andasibe, 18°56'S, 48°24'E, elev. 1000 m, 4–5 November 1993 (C. Griswold) 2♀ (CAS).

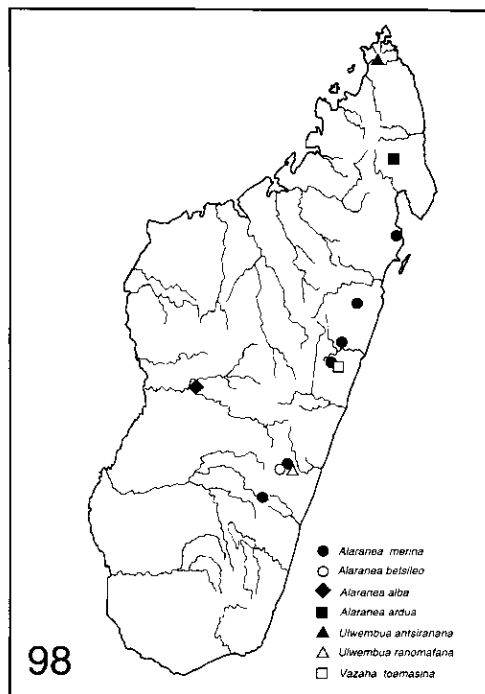
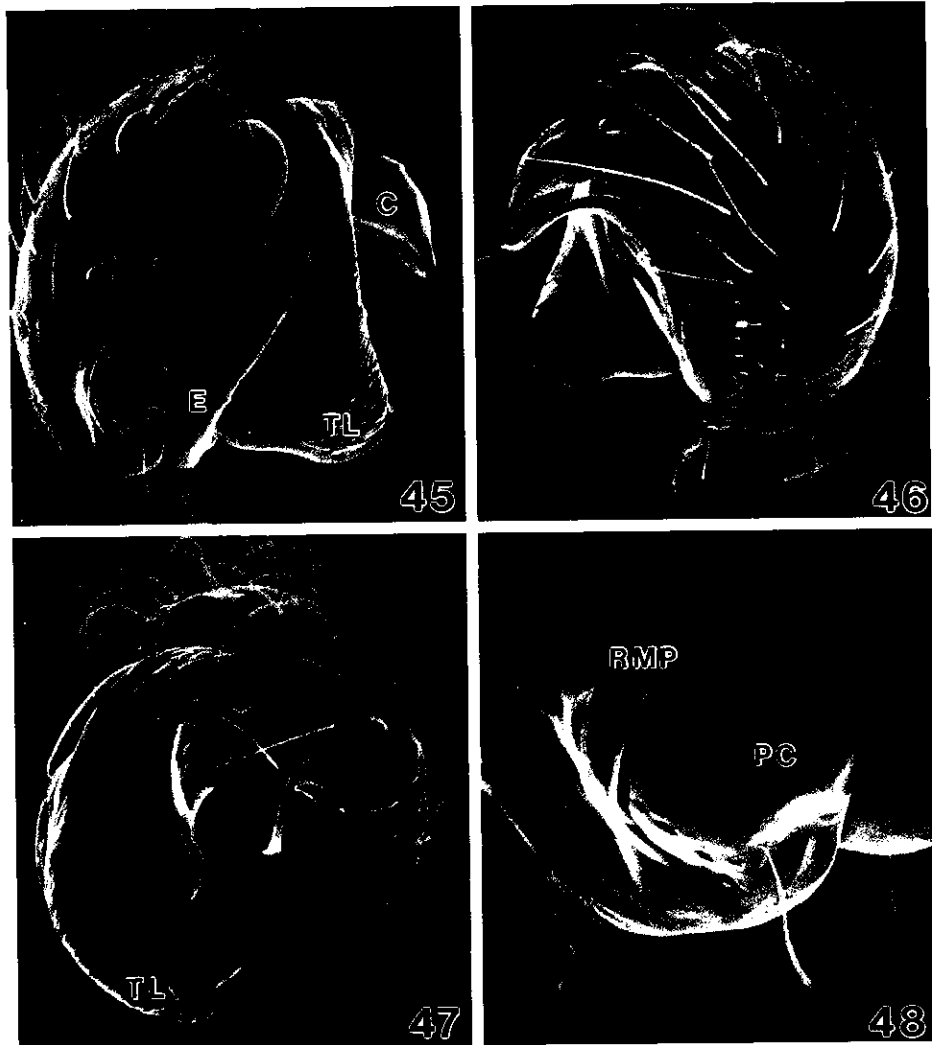


Figure 98.—Map showing distributions of Cyatholipidae in Madagascar. [Griswold, 1997:82].



Figures 45-48.—*Vazaha toamasina* new species, holotype male, right palpus. 45. Retrolateral view; 46. Prolateral view; 47. Ventral view; 48. Cymbial base, retrolateral view. C = conductor; E = embolus; PC = paracymbium; RMP = retromedian cymbial process; TL = ventromedian tegular lobe.