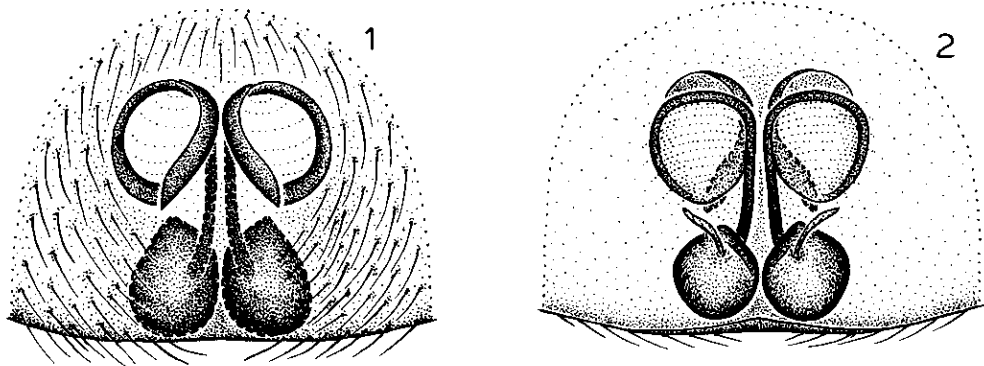


Platnick, N. I. 1995. New species and records of the ground spider family Gallieniellidae (Araneae, Gnaphosoidea) from Madagascar. *J. Arachnol.* 23: 9. [Courtesy The American Arachnological Society].



Figures 1–2. *Gallieniella blanci* Platnick, epigynum: 1, ventral view; 2, dorsal view.

Gallieniella blanci Platnick
(Figs. 1, 2)

Note.—The female here assigned to this species was not taken with a male, but is paired on the basis of genitalic similarities of both males and females to those of *G. mygaloides* (Figs. 1, 2).

Diagnosis.—The newly described female can easily be separated from those of the other known species by the relatively large spermathecae, which approach the coiled anterior ducts in size.

Female.—Total length, not including chelicerae, 4.57. Carapace 2.00 long, 1.92 wide, dark chestnut brown; pars thoracica with recumbent white scales. From above, anterior eye row recurved, posterior row slightly recurved; from front, both rows very slightly procurved; eye sizes and interdistances: AME 0.06, ALE 0.08, PME 0.06, PLE 0.05; AME-AME 0.13, AME-ALE 0.03, PME-PME 0.15, PME-PLE 0.06, ALE-PLE 0.07; MOQ length 0.20, front width 0.25, back width 0.27. Clypeal height at AME about 1.6 times their diameter. Chelicerae extending for-

ward distance about one-third of carapace length, bearing long fang without distinct ventral tubercle but abruptly narrowed at about one-third its length, narrow portion much paler than thicker portion; most distal promarginal tooth widely separated from other two subequal teeth, all promarginal teeth larger than two widely separated retromarginal teeth. Leg spination: femora II–IV d1-0-0; tibiae: III p0-1-0, v2-2-0, r0-1-0; IV p0-0-1, v4-2-2, r0-0-1; metatarsus IV v1p-0-0. Legs light brown except sides of femora I, II, IV light yellow. Abdomen dark gray, dorsum with two longitudinal white stripes at sides, stripes connected posteriorly by seven chevrons; venter paler than sides. Palpal femur and more distal segments with dorsal spines grading into bristles, tibia and tarsus each with proximal prolateral spine as well. Spermathecae almost as large as anterior, coiled epigynal ducts (Figs. 1, 2).

New record.—**MADAGASCAR.** *Toliara:* Mahafaly, nr. Eleotse, by Lac Tsimanampetsoa, 24°10'S, 43°45'E, Sept. 15–16, 1992 (V., B. Roth, CAS), 1♀.