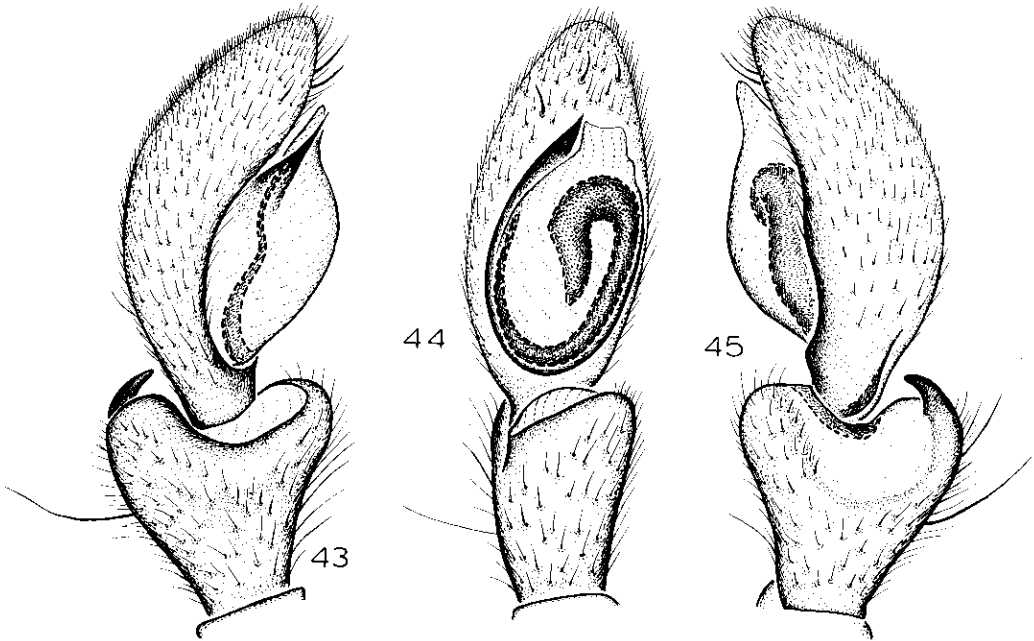


Platnick, N. I. 1984. Studies on Malagasy spiders, 1. The family Gallieniellidae (Araneae, Gnaphosoidea). *Am. Mus. Novit.* 2801: 13-14. [Courtesy The American Museum of Natural History].



FIGS. 43-45. *Legendrena perinet*, new species. 43. Palp, prolateral view. 44. Palp, ventral view. 45. Palp, retrolateral view.

***Legendrena perinet*, new species**

Figures 43-45

**TYPE:** Male holotype from the Forêt d'Analamazaotra, near the Périnet railway station, Tamatave, Madagascar (September 20, 1958; J. Lepointe), deposited in MNHN.

**ETYMOLOGY:** The specific name is a noun in apposition taken from the type locality.

**DIAGNOSIS:** Males can be recognized by the expanded palpal tibia (figs. 43-45).

**MALE:** As in *L. angavokely*, except for the following. Total length, not including chelicerae, 3.71. Carapace 1.87 long, 1.55 wide, light reddish brown. From front, anterior eye row straight; eye sizes and interdistances: AME 0.06, ALE 0.10, PME 0.08, PLE 0.09; AME-AME 0.05, AME-ALE 0.02, PME-PME 0.12, PME-PLE 0.05, ALE-PLE 0.04; MOQ length 0.17, front width 0.18, back

width 0.28. Clypeal height at AME twice their diameter. Chelicerae extending forward distance about two-sevenths of carapace length, distal one-third flattened laterally, where bordered by short setae on elevated bases. Labium longer than wide. Leg spination (leg IV missing): femora I-III d1-0-0. Only proximal half of tibia I dark brown; femur, patella, and tibia I only moderately enlarged. Dorsum of abdomen without white band, with only indistinct transverse band of white scales. Dorsal apophysis of palpal tibia apically hooked, segment expanded ventrally (figs. 43-45).

**FEMALE:** Unknown.

**OTHER MATERIAL EXAMINED:** None.

**DISTRIBUTION:** Known only from eastern Madagascar.