

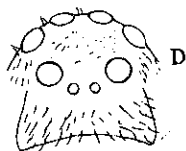
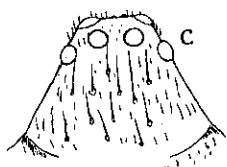
*Geraesta bilobata* Simon, 1897

**Geraesta** E. Sim., *Ann. Soc. ent. Fr.*, 1888, p. 224. [1897: 9-10].

Cephalothorax non multo longior quam latior, parte thoracica utrinque ample rotunda, in medio sulcata, cephalica fere abrupte angustiore, postice sulcis obliquis vel impressione semicirculari discreta, antice leviter attenuata et acclivi, fronte sat angusta et truncata. Area oculorum latitudinem frontalem totam occupans. Oculi antici in lineam recurvam, inter se valde inæquales, laterales magni, medii minutissimi. Oculi postici in lineam paulo latiore, recurvam, inter se æqui vel sæpius medii paulo minores et fere æquidistantes. Area mediorum multo longior quam latior et antice quam postice multo angustior. Clypeus area oculorum non multo angustior et sub oculis leviter depressus. Pars labialis longior quam latior, apice truncata, rarius obtusa. Pedes longi, inter se valde inæquales (antici quatuor reliquis multo longiores), valde et numerose aculeati, metatarsis, saltem anticis, tibiis brevioribus, tarsis gracilibus setosis haud vel vix distincte fasciculatis.

TYPUS : *G. hirta* E. Sim.

AR. GEOGR. : Ins. Madagascar.



c. *Geraesta hirta* E. Sim. Front en dessus. — d. *Idem*. Front vu en avant. —  
e. *Geraesta bilobata* E. Sim. Patte-mâchoire du mâle. —